

eSELECT M SERIES



The eSelect M is a multi-function measuring instrument featuring one (M1), two (M2) or three (M3) measurement parameters suitable for measuring the pH, Rx (Redox), Free CHLORINE (Residual), Total CHLORINE and Conductivity.

The eSelect M range, along with high quality performances and advanced functions, offers several characteristics that make it versatile and easy to use.

Common Features:

- PH and Rx can be selected on the same model by simply programming and using the related probe;
- Free or Total Chlorine measure may be chosen on the basis of the type of sensor used and the relative measuring range: - ion-selective membrane sensors with measure ranges 0-2 Cl ppm; 0-20 Cl ppm; 0-20 Cl ppm (Total); - open type amperometric cell (model CLC) with measure range 0-10 Cl ppm
- Timed AUX outputs programming; Adjustable timer mode; switch-on time programming.
- Suitable for software EtaCloud connection; optional accessory: connectivity kit
- Available boxes: wall mounting (IP65)
- Backlighted graphic display (128x64)
- Start-up delay
- Alarm relay, NO or NC programmable from the user
- Automatic temperature compensation, (by PT100 probe or NTC) or manual



M1 CD Cool

“Instruments to measure and control the electric conductivity”

eSelect-M1 CD Cool is an electrical conductivity measurement and control instrument, specifically designed for cooling towers. The programming menu contains functions specifically designed for this application, while a wide graphic display and a user-friendly navigation menu make it a very simple product for the end users.

General Features

- Automatic monitoring of dosing pumps and solenoid valve by the conductivity measure or by the timer;
- Measure: electric conductivity and temperature (C°)
- Two 4-20mA output, programmable by the user
- 4 setpoint outputs, ON/OFF or PWM (Pulse Width Modulation) working mode;
- Adjustable Hysteresis on the setpoint value; delay time on relay activation
- MAX and MIN alarm on the value measure
- Overdosing Alarm (excessive dosing time)
- Timer built-in for start/stop control of the instrument
- Alarm relay
- Accurated dosing of the chemicals, inhibitor and two biocides;
- Four operative modes for inhibitor dosing;
- Biocides dosing cycles programmable by timer or clock;
- Flow sensor input
- Level probe input

CD COOL	
CXB 50 181 01	100/240V
CXB 50 182 01	12/24V

Discharge solenoid valve control, both with conductivity value and in timer mode.

Inhibitor dosing control, directly according to the water discharge (solenoid valve closing) or via internal timer, with the possibility of the proportional dosing via water-meter pulse-sender

Biocide dosing control, with the possibility of controlling two dosing pumps for the biocide with two dosing programs; timed programming with 99 programs for each biocidal product; possibility of blocking pumps during water discharge (solenoid valve open)



M1

“Measure and control instruments”

eSelect-M1 series is a family of controllers with one channel measure (+ temperature). The wide graphic display and the user-friendly navigation make it a very simple product for the end-user. Predisposed for Eatcloud connection, thanks to the “Connection Kit” (not included with the controller) the eSelect-M1 can be managed in a remote way.

General Features

- Available measures: pH, Redox (mV), Free Chlorine (ppm), Total Chlorine (ppm),
- Conductivity and temperature (C°)
- Chlorine measure (ppm) by selective membrane sensor or amperometric cell Platinum-Copper
- 2 setpoint, ON/OFF mode or PWM (Pulse Width Modulation);
- Version pH or Redox, selectable from the user
- Timer mode, connected to auxiliary relay
- N.2 4-20mA outputs, programmable from the user
- Adjustable hysteresis on setpoint value; delay time on activation relay
- Alarm MAX and MIN mode on measure value
- Overdosing Alarm (excessive dosing time)
- Timer built-in to manage start/stop of the controller
- Input for level sensor or flow sensor

M1 CD	
CXB 50 161 01	100/240V
CXB 50 162 01	12/24V
M1 pH (Rx)	
CXB 50 201 01	100/240V
CXB 50 202 01	12/24V
M1 Cl	
CXB 50 251 01	100/240V
CXB 50 252 01	12/24V



SR

(DIN 43700 - 96 x 96 x 126 mm)

- Suitable for software EtaCloud connection; optional accessory: connectivity kit.

SR CD	
CXR 50053 01	100/240V
CXR 50063 01	12/24V
SR pH (Rx)	
CXR 50051 01	100/240V
CXR 50061 01	12/24V
SR Cl	
CXR 50052 01	100/240V
CXR 50062 01	12/24V



M2

“Measure and control instruments”

eSelect-M2 series is a family of controllers using two measurement channels (+ temperature). The wide graphic display and the user-friendly navigation make it a very simple and intuitive product for end-users. Predisposed for Eatcloud connection, thanks to the “Connection Kit” (not included with the controller), the eSelect-M2 can be managed remotely.

General Features

- Measures: pH, Redox (mV), Free Chlorine (ppm), Total Chlorine (ppm), Conductivity and temperature (C°)
- Version pH or Redox, selectable from the user
- Standard versions: pH(Rx)-pH(Rx); pH(Rx)-Cl; pH(Rx)-CD
- Timer mode, connected to auxiliary relay
- N.2 4-20mA outputs, programmable from the user
- Chlorine measure (ppm) by selective membrane sensor or amperometric cell Platinum-Copper
- 2 setpoint for each measure, ON/OFF mode or PWM (Pulse Width Modulation);
- Adjustable hysteresis on setpoint value; delay time on activation relay
- Alarm MAX and MIN mode on each measure
- Overdosing Alarm (excessive dosing time) for each measure
- Timer built-in to manage start/stop of the controller
- N.2 inputs for level sensor
- Flow sensor input

pH-Rx	
CXB 50 401 01	100/240V
CXB 50 402 01	12/24V
pH(Rx)-Cl	
CXB 50 351 01	100/240V
CXB 50 352 01	12/24V
pH(Rx)-CD	
CXB 50 301 01	100/240V
CXB 50 302 01	12/24V



M3

“Measure and control instruments”

eSelect-M3 series is a family of controllers with three channels measures (+ temperature). The wide graphic display and the user-friendly navigation make it a very simple product for the end-user. Predisposed for Eatacloud connection, thanks to the “**Connection Kit**” (not included with the controller) the eSelect-M3 can be managed in a remote way.

General Features

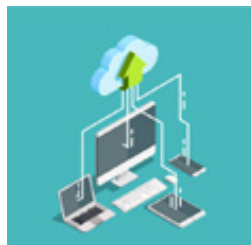
- Measures: pH, Redox (mV), Free Chlorine (ppm) and temperature (C°)
- Standard version: pH – Rx – CL
- Timer mode, connected to auxiliary realy
- N.3 4-20mA outputs, programmable from the user
- Chlorine measure (ppm) by selective membrane sensor or amperometric cell Platinum-Copper
- 2 setpoint for each measure, ON/OFF mode or PWM(Pulse Width Modulation);
- Adjustable hystesys on setpoint value; delay time on activation relay
- Alarm MAX and MIN mode on each measure
- Overdosing Alarm (excessive dosing time) for each measure
- Timer built-in to manage start/stop of the controller
- N.3 inputs for level sensor
- Flow sensor input

pH-Rx-CL	
CXB 50 451 01	100/240V
CXB 50 452 01	12/24V

Technical Features

Models	1 measure channels		2 measure channels		3 measure channels
Functions	pH or Redox (programmable from the user), Chlorine (ppm), Conductivity, Temperature				
Measure range	pH 0...14,00	Redox (mV) -1000...+1400	Chlorine (ppm) 0...2 / 0...10 / 0...200	Temperature (C°) 0...100	Conductivity 0...20mS (*)
Display	Graphic backlighted 128x64				
User Interface	Keyboard 4 keys				
Relay	5 A - 230 V, free contact				
Hysteresis	Programmable on the setpoint value				
Delay time	Programmable with setpoint value to close or open the relay contact				
Output	n.2 4-20 mA, signals programmable from the user 500 ohm maximum load impedance, with galvanic separation				
Auxiliary output	Relay connected with timer function				
Power supply	100,,230 V – 50/60 Hz – 6W				
RS485/Ethernet	Modbus protocol with Eatacloud software, for the remote control via PC, smartphone or tablet (NO FOR CD COOL)				
Box	in ABS, protection degree IP65				

ETA CLOUD



The **EtaCloud** software supports remote control of all the operating and programming parameters of the eSelect-M. The user, via smartphone, tablet or PC, can perform all monitoring and control operations from the device connected to the Internet, exactly as if he is facing the controller. The software sends - via email - alarms and status changes to the operator, thus enabling remote technical service.

The connection with **EtaCloud** takes place thanks to the **Connectivity Kit** (not included with the instrument), which consists of an RS485/USB cable, an external module and a 5V power supply.

Overall Dimensions



Connectivity kit

Etacloud connection is possible through the connectivity kit (to be purchased separately).

The kit is made up of an external black module, RS485/USB cable (to be connected to the controller) and a power supply. LAN cable is required to be connected to the router or extender.



KST 00001 01





eSelect M TOUCH “Measure and control Instruments”

eSelect-M TOUCH series is a family of controllers with four channels measures (+ temperature). The wide 7” touch display and the user-friendly navigation make it a very simple product for the end-user. Predisposed for Eatacloud connection, thanks to the “**Connection Kit**” (not included with the controller) the eSelect-M TOUCH can be managed remotely.

NEW



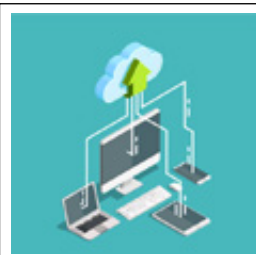
General Features

- Measures: pH, Redox (mV), Free Chlorine (ppm) Total Chlorine (ppm) and temperature (C°)
- Standard version: pH – Rx – CL- CL tot.
- N.1 4-20mA outputs, programmable from the user, for each measure
- Chlorine measure (ppm) by selective membrane sensor or amperometric cell Platinum-Copper
- 1 setpoint for each measure, ON/OFF mode or PWM (Pulse Width Modulation); (2 set points only for the first measure)
- Adjustable hysteresis on setpoint value; delay time on activation relay
- Alarm MAX and MIN mode on each measure
- Overdosing Alarm (excessive dosing time) for each measure
- Alarm relay, NO
- LCD Touch Display (800x480 pixel)
- Timer built-in to manage start/stop of the controller
- Start-up delay
- N.1 inputs for level probe for each measure
- Flow sensor input
- 3 Time-programmable AUX outputs
- Possibility to enter Administrator Password

Technical Features

Models	3 measure channels	4 measure channels
Functions	pH, Redox (mV), Chlorine (ppm), selectable from the user	
Measure range	pH 0...14,00	Redox (mV) -1000...+1400 Chlorine (ppm) - PPM 0...2 / 0...5 / 0...10 / 0...20 / 0...200 / 0...2000
Display	7” LCD Touch Display 800x480 Pixel	
User Interface	Touch Screen	
Relay	5 A - 230 V, free contact	
Hysteresis	Programmable on the setpoint value	
Delay time	Programmable with setpoint value to close or open the relay contact	
Output	4-20 mA signals programmable from the user 500 ohm maximum load impedance, with galvanic separation	
Auxiliary output	Relay connected with timer function	
Power supply	100,,,230 V – 50/60 Hz – 6W	
RS485/Ethernet	Modbus protocol with Eatacloud software, for the remote control via PC, smartphone or tablet	
Box	120x200x90,5 in ABS, protection degree IP65	

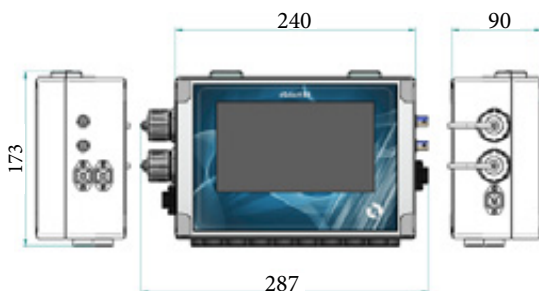
ETA CLOUD



The **EtaCloud** software supports remote control of all the operating and programming parameters of the eSelect-M. The user, via smartphone, tablet or PC, can perform all monitoring and control operations from the device connected to the Internet, exactly as if he is facing the controller. The software sends - via email - alarms and status changes to the operator, thus enabling remote technical service.

The connection with **EtaCloud** takes place thanks to the **Connectivity Kit** (not included with the instrument), which consists of an RS485/USB cable, an external module and a 5V power supply.

Overall Dimensions



Connectivity kit

Etacloud connection is possible through the connectivity kit (to be purchased separately). The kit is made up of an external black module, RS485/USB cable (to be connected to the controller) and a power supply. LAN cable is required to be connected to the router or extender.



KST 00001 01

CONTROL AND REGULATING SYSTEMS

pH-Rx Control Unit

Control and regulating system for pH and Redox, made of eSELECT-M2 controller, block valves, connection for tube 10x14 mm, water filter with washable net cartridge 150 microns, methacrylate probe holder, pH electrode with plastic body with cable 1 mt (Tmax=60° C Pmax=6 bar) working range 0÷14 pH, Redox electrode with plastic body with cable 1 mt (Tmax=60° C Pmax=6 bar) working range ± 1.000 mV, 4 buffer solution 55ml bottles (pH 4, 7, 9 and Redox 650 mV), 2 manual pumps wiring connection available in the central box trunking. Suitable for software EtaCloud connection; optional accessory: connectivity kit.

pH-Rx	
eSelect M2 (it-en)	QPA 510110 02
eControl 2	QPA 5W110 02
without controller	QPA 5A110 02
2 ePool 3-3	QPA 5U110 02

Panel dimensions 400 x 600 x 0.80 mm



pH-Rx-F Control Unit

“with flow control and adjustment system”

Control and regulating system for pH and Redox, made of eSELECT-M2 controller, block valves, connection for tube 10x14 mm, water filter with washable net cartridge 150 microns, methacrylate probe holder with proximity switch and adjustment flow system, manual sampling, pH electrode with plastic body with cable 1 mt (Tmax=60° C Pmax=6 bar) working range 0÷14 pH, Redox electrode with plastic body with cable 1 mt (Tmax=60° C Pmax=6 bar) working range ± 1.000 mV, 4 buffer solution 55ml bottles (pH 4, 7, 9 and Redox 650 mV), 2 manual pumps wiring connection available in the central box trunking. Suitable for software EtaCloud connection; optional accessory: connectivity kit.

pH-Rx-F	
eSelect M2 (it-en)	QPA 510110 62
eControl 2	QPA 5W110 12
without controller	QPA 5A110 12

Panel dimensions 400 x 600 x 0.80 mm



P Cl-F Control Unit

“with flow control and adjustment system”

Control and regulating system for free chlorine, made of eSELECT-M1 controller, block valves, connection for tube 10x14 mm, water filter with washable net cartridge 150 microns, methacrylate probe holder with proximity switch and adjustment flow system, manual sampling, free inorganic and organic chlorine probe, (0 – 20) ppm measuring range, probe shows low pH dependence (pH working range 4- 12 pH), chlorine measuring is not affected by isocyanuric acid, surfactants/flocculants presence, the probe is automatic temperature-compensated, 0,7 mt probe cable, 1 manual pump wiring connection available in the central box trunking. The unit required a constant flow rate between 30 and 40 l/h, do not exceed the maximum operating pressure of 1 bar (free discharge at probe holder outlet) while water temperature cannot overcome 45°C. The probe has integrated temperature compensation. Suitable for software EtaCloud connection; optional accessory: connectivity kit.

Cl-F P (0-2 ppm)		Cl-F P (0-20 ppm)	
eSelect M1 (it-en)	QPT 307003 62	eSelect M1 (it-en)	QPT 307002 62
eControl 1	QPT 30X007 12	eControl 1	QPT 30X006 12
without controller	QPT 30A003 12	without controller	QPT 30A002 12

Panel dimensions 400 x 600 x 0.80 mm





pH-Cl-F P Control Unit

“with flow control and adjustment system”

Control and regulating system for free chlorine and pH, made of eSELECT-M2 controller, block valves, connection for tube 10x14 mm, water filter with washable net cartridge 150 microns, methacrylate probe holder with proximity switch and adjustment flow system, manual sampling, free inorganic and organic chlorine probe, (0 – 20) ppm measuring range, probe shows low pH dependence (pH working range 4-12 pH), chlorine measuring is not affected by isocyanuric acid, surfactants/floculants presence, the probe is automatic temperature-compensated, 0,7 mt probe cable, pH electrode with plastic body with cable 1 mt (Tmax=60° C Pmax=6 bar) working range 0÷14 pH, 3 buffer solution 55ml bottles (pH 4, 7 and 9), 2 manual pumps wiring connection available in the central box trunking. The unit required a constant flow rate between 30 and 40l/h, do not exceed the maximum operating pressure of 1 bar (free discharge at probe holder outlet) while water temperature cannot overcome 45°C. The probe has integrated temperature compensation. Suitable for software EtaCloud connection; optional accessory: connectivity kit.



pH-Cl-F P (0-2 ppm)	
eSelect M2 (it-en)	QPT 610103 62
eControl 2	QPT 60W107 12
without controller	QPT 60A103 12

pH-Cl-F P (0-20 ppm)	
eSelect M2 (it-en)	QPT 610102 62
eControl 2	QPT 60W106 12
without controller	QPT 60A102 12

Panel dimensions 400 x 600 x 0.80 mm



pH-Rx-Cl-F P Control Unit

“with flow control and adjustment system”

Control and regulating system for free chlorine, pH and Redox, made of eSelect-M3 controller, block valves, connection for tube 10x14 mm, water filter with washable net cartridge 150 microns, methacrylate probe holder with proximity switch and adjustment flow system, manual sampling, free inorganic and organic chlorine probe, (0 – 20) ppm measuring range, probe shows low pH dependence (pH working range 4-12pH), chlorine measuring is not affected by isocyanuric acid, surfactants/floculants presence, the probe is automatic temperature-compensated, 0,7 mt probe cable, pH electrode with plastic body with cable 1 mt (Tmax=60° C Pmax=6 bar) working range 0÷14 pH, Redox electrode with plastic body with cable 0,5 mt (Tmax=60° C Pmax=6 bar) working range ± 1.000 mV, 4 buffer solution 55ml bottles (pH 4, 7, 9 and Redox 650 mV), 2 manual pumps wiring connection available in the central box trunking. The unit required a constant flow rate between 30 and 40l/h, do not exceed the maximum operating pressure of 1 bar (free discharge at probe holder outlet) while water temperature cannot overcome 45°C. The probe has integrated temperature compensation. Suitable for software EtaCloud connection; optional accessory: connectivity kit.



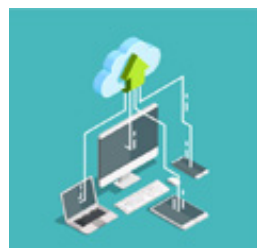
pH-Rx-Cl-F P (0-2 ppm)	
eSelect M3 (it-en)	QPT 811113 62
without controller	QPT 80A113 12

pH-Rx-Cl-F P (0-20 ppm)	
eSelect M3 (it-en)	QPT 811112 62
without controller	QPT 80A112 12

Panel dimensions 400 x 600 x 0.80 mm

NEW

ETA CLOUD



The **EtaCloud** software supports remote control of all the operating and programming parameters of the eSelect-M. The user, via smartphone, tablet or PC, can perform all monitoring and control operations from the device connected to the Internet, exactly as if he is facing the controller. The software sends - via email - alarms and status changes to the operator, thus enabling remote technical service.

The connection with **EtaCloud** takes place thanks to the **Connectivity Kit** (not included with the instrument), which consists of an RS485/USB cable, an external module and a 5V power supply.



Connectivity kit

Etacloud connection is possible through the connectivity kit (to be purchased separately).

The kit is made up of an external black module, RS485/USB cable (to be connected to the controller) and a power supply. LAN cable is required to be connected to the router or extender.



KST 00001 01



ePhoton

Photometric controller with microprocessor technology. Wall mounting, electronic size IP65 protection degree. Backlighted graphic Display. Internal data logger with 4MB memory Flash da 4MB for data storage. Free Chlorine and combined Chlorine: measure range 0.00÷5.00 ppm, resolution ±0.01 ppm Cl₂; accuracy ±2%, repeatability 98%. Selectable analysis time: 3...999 minutes pH measure: measure range 0.00÷14.00 pH, resolution ±0.01pH. accuracy ±1% Rx measure: measure range -1500...+1500 mV, resolution ±1 mV. accuracy ±1% Temperature measure (PT1000 sensor): measure range 0.0 ÷ 50.0°C, resolution ±0.1°C. accuracy ± 0.2°C, repeatability 99%.

General Features

- Set point Chlorine and Set point pH: Nr. 2 Relay outputs ON and OFF selectable, proportional in PWM mode, max 5A - 250V, timed output, priority clock output during the 24H.
- Set point Redox and Set point combined Chlorine: Nr. 1 Relay output ON and OFF selectable, proportional in PWM mode, max 5A - 250V, timed output
- Relay output for anti-algae/flocculant with clock selectable control during the 24H, max 5A, 230V
- General alarm relay, max 5A - 250V (water absence, reactive absence, Time-Out set point Chlorine/pH, measure cell dirty or damaged, led faulty)
- Digital input for set-point inhibition
- working temperature 5 ÷ 45 C. working humidity 10 ÷ 95%
- RS485 connection (MODBUS RTU protocol)
- power supply 85-265Vac / 50-60Hz.

Panel dimension 640 x 700 x 240



ePhoton	
pH-Rx-C°-Cl free	QXB 00031 01
Version equipped with current output	QXB 00031 02

ePhotonN/C	
pH-Rx-C°-Cl free-Cl total	QXB 00032 01
Version equipped with current output	QXB 00032 02

Replacement reagents Kit	
free Chlorine	ASZ 00030 01
total Chlorine	ASZ 00031 01

Kit di montaggio	
Consisting of the complete filter cartridge, ball valve, PVC pipes and fittings	KPA 00018 01



ePhoton EL pH-Cl₂/T

Photometric, fibre optic, multi-parameter microprocessor control unit. Wall mounting with degree of protection of the electronic section IP65. Backlit graphic display. Measurement of free chlorine 0.00÷5.00 ppm, resolution ± 0.01 ppm Cl₂. Accuracy ± 2%, repeatability 98%. Programmable analysis time from 2 to 300 minutes pH measurement: Measuring range 0.00÷14.00 pH, resolution ± 0.01 pH. Accuracy ±1% Measurement Temperature (NTC sensor). Measuring range 0.0 ÷ 50.0°C, Resolution ± 0.1°C. Accuracy ± 0.2°C, repeatability 99%.

General Features

- Chlorine/ pH set point: No. 3 ON/OFF relay outputs (2 for Cl₂ - 1 for Ph . Max load 3A - 230V.
- Relay Cumulative alarm, max load 3A - 230V (lack of water through static flow sensor, lack of reactive Time-Out set point chlorine/pH, dirty/foul cell, burnt-out led).
- Working temperature 5 ÷ 55 °C. Operating humidity 10 ÷ 95%.
- Provision for display repetition via radio and PC - GPRS connection for web connection web
- - Hydraulic circuit under pressure
- - Power supply 85-265Vac / 50-60Hz.



ePhoton EL pH-Cl ₂ /T
QXB 00035 01